

8mm+12A+8mm gray reflective silk screen printing tempered insulated glass, 8mm+12A+8mm gray reflective heat proof energy saving double glazing glass for skylight



About 8mm clear silk screen printing tempered glass+12A+8mm gray reflective tempered glass

This type double glazing glass consists of two pieces glass of [8mm clear silk screen printing toughened glass](#) and 8mm gray reflective tempered glass. The different pieces of glass are isolated through aluminum tubes whose insides are filled with desiccant. The air space is inflated with dry air or inert gas and sealed with butyl rubber, polysulphide sealed, or structural adhesive to form glass with dry space.



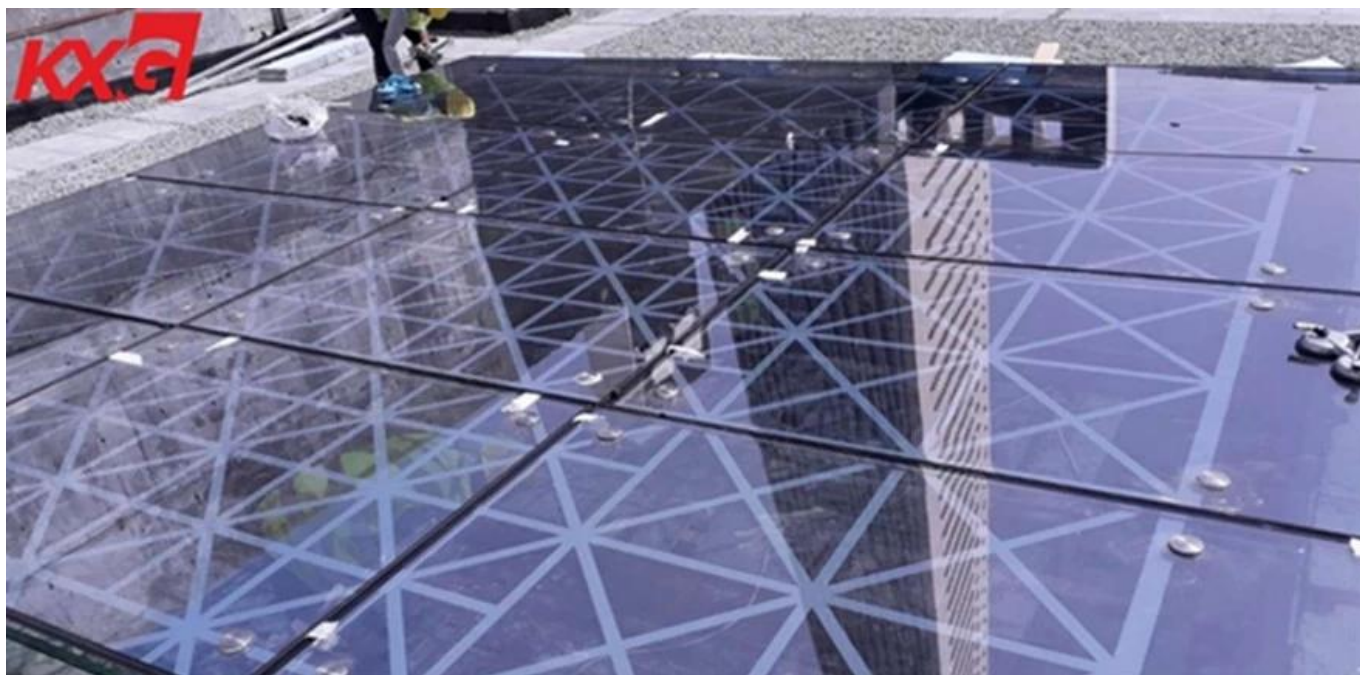
8mm+12A+8mm gray reflective silk screen printing toughened double glazing glass skylight

skylight glass also named roof glass, sunroof glass and canopy glass etc. Glass roof as a new popular building material whatever in residence or commercial. [Using the glass for skylight](#) in one hand, it makes the light come through the indoors fully, on the other hand, compare with concrete, glass material is less weight and makes the building more attractive.



What's the advantage of skylight glass?

1. Creating a light well by using glass in the roof is a popular way of introducing light to central areas of a building.
2. Glass cladding in building fulfill functional requirement of lighting, heat retention and energy saving.
3. Use of glass in construction work adds beauty to the building. Glass is an excellent material for thermal insulation, water proofing and energy conservation.
4. Glass is bad conductor of heat; it saves energy in air conditioning of building.



What kind of skylight glass you can get from Kunxing Glass Factory?

We offer such roof glass as :flat and curved tempered laminated glass roof , tempered laminated insulated glass skylight , [Low E insulated glass window](#) skylight, tinted tempered laminated glass canopy, toughened laminated skylight glass etc.

8mm clear silk screen printing tempered glass+12A+8mm gray reflective tempered glass Kuwait Project of Skylight

